



Rise & Shine With Nutri-Serve!

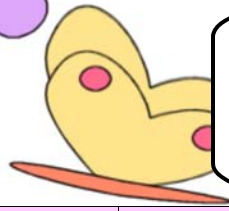
PRIMARY BREAKFAST MENU

We use the healthier whole grain versions of your breakfast favorites!

Breakfast Includes: Milk & Fruit
It is served from 8:30-9am!

Daily Alternates:
Assorted Cereal w/cheesestick
Kellogg's Poptart

March Breakfast Menu Barrington School District



Did you know?!?
Eating within two hours of waking up jumpstarts your metabolism ~ the rate at which your body burns calories!



		Wednesday-March 1	Thursday-March 2	Friday-March 3
		Hot Ham & Cheese On a Biscuit <u>Sides:</u> <i>Fruit: Fresh/Cupped/Juice</i> Milk Choice	Pancakes or Waffles w/ Syrup <u>Sides:</u> <i>Fruit: Fresh/Cupped/Juice</i> Milk Choice	Pillsbury Cini Mini <u>Sides:</u> <i>Fruit: Fresh/Cupped/Juice</i> Milk Choice
Monday-March 6	Tuesday-March 7	Wednesday-March 8	Thursday-March 9	Friday-March 10
Warm Cinnamon Bun <u>Sides:</u> <i>Fruit: Fresh/Cupped/Juice</i> Milk Choice	Bacon Egg & Cheese Breakfast sandwich <u>Sides:</u> <i>Fruit: Fresh/Cupped/Juice</i> Milk Choice	Sausage, Egg, Cheese On a Bagel <u>Sides:</u> <i>Fruit: Fresh/Cupped/Juice</i> Milk Choice	Pancakes or Waffles w/ Syrup <u>Sides:</u> <i>Fruit: Fresh/Cupped/Juice</i> Milk Choice	Pillsbury Cini Mini <u>Sides:</u> <i>Fruit: Fresh/Cupped/Juice</i> Milk Choice
Monday-March 13	Tuesday-March 14	Wednesday-March 15	Thursday-March 16	Friday-March 17
Chocolate Chip Muffin <u>Sides:</u> <i>Fruit: Fresh/Cupped/Juice</i> Milk Choice	Bacon Egg & Cheese Breakfast sandwich <u>Sides:</u> <i>Fruit: Fresh/Cupped/Juice</i> Milk Choice	Hot Ham & Cheese On a Biscuit <u>Sides:</u> <i>Fruit: Fresh/Cupped/Juice</i> Milk Choice	Pancakes or Waffles w/ Syrup <u>Sides:</u> <i>Fruit: Fresh/Cupped/Juice</i> Milk Choice	Pillsbury Cini Mini <u>Sides:</u> <i>Fruit: Fresh/Cupped/Juice</i> Milk Choice
Monday-March 20	Tuesday-March 21	Wednesday-March 22	Thursday-March 23	Friday-March 24
Warm Cinnamon Bun <u>Sides:</u> <i>Fruit: Fresh/Cupped/Juice</i> Milk Choice	Bacon Egg & Cheese Breakfast sandwich <u>Sides:</u> <i>Fruit: Fresh/Cupped/Juice</i> Milk Choice	Sausage, Egg, Cheese On a Bagel <u>Sides:</u> <i>Fruit: Fresh/Cupped/Juice</i> Milk Choice	Pancakes or Waffles w/ Syrup <u>Sides:</u> <i>Fruit: Fresh/Cupped/Juice</i> Milk Choice	Pillsbury Cini Mini <u>Sides:</u> <i>Fruit: Fresh/Cupped/Juice</i> Milk Choice
Monday-March 27	Tuesday-March 28	Wednesday-March 29	Thursday-March 30	Friday-March 31
Chocolate Chip Muffin <u>Sides:</u> <i>Fruit: Fresh/Cupped/Juice</i> Milk Choice	Bacon Egg & Cheese Breakfast sandwich <u>Sides:</u> <i>Fruit: Fresh/Cupped/Juice</i> Milk Choice	Hot Ham & Cheese On a Biscuit <u>Sides:</u> <i>Fruit: Fresh/Cupped/Juice</i> Milk Choice	Pancakes or Waffles w/ Syrup <u>Sides:</u> <i>Fruit: Fresh/Cupped/Juice</i> Milk Choice	Pillsbury Cini Mini <u>Sides:</u> <i>Fruit: Fresh/Cupped/Juice</i> Milk Choice

Breakfast Prices: *Menu subject to change
 Regular Breakfast: \$1.25 Reduced: \$0.25 ~ Milk: \$0.55
 Food Service Director: Michelle Kitchenman ~ BAR@nsfm.com ~
 Phone: 856-547-8402 ext 252
 If you receive free or reduced lunch your are eligible for free
 and reduced breakfast!
Milk: FatFree Chocolate, Fat Free Strawberry, 1% White, Lactaid

